

# 第50回東京都ボウリング選手権大会



Oil Pattern Distance: **42 Feet**  
 Forward Oil Total: **16.3 mL**  
 Forward Boards Crossed: **326 Boards**

Reverse Brush Drop: **42 Feet**  
 Reverse Oil Total: **10.95 mL**  
 Reverse Boards Crossed: **219 Boards**

Oil Per Board: **50 uL**  
 Volume Oil Total: **27.25 mL**  
 Total Boards Crossed: **545 Boards**

Start	Stop	Loads	Speed	Crossed	Start	End	Feet	T.Oil
1	4L 4R	1	14	33	0.0	0.0	0.0	1650
2	7L 7R	2	14	54	0.0	3.9	3.9	2700
3	8L 8R	2	14	50	3.9	7.8	3.9	2500
4	9L 9R	3	18	69	7.8	15.4	7.6	3450
5	10L 10R	3	18	63	15.4	23.0	7.6	3150
6	11L 11R	3	22	57	23.0	32.3	9.3	2850
7	2L 2R	0	26	0	32.3	36.0	3.7	0
8	2L 2R	0	30	0	36.0	42.0	6.0	0

Forward Reverse More

Start	Stop	Loads	Speed	Crossed	Start	End	Feet	T.Oil
1	2L 2R	0	30	0	42.0	34.0	-8.0	0
2	12L 12R	2	26	34	34.0	26.7	-7.3	1700
3	10L 10R	2	26	42	26.7	19.4	-7.3	2100
4	8L 8R	2	22	50	19.4	13.2	-6.2	2500
5	6L 6R	2	22	58	13.2	7.0	-6.2	2900
6	3L 3R	1	18	35	7.0	4.5	-2.5	1750
7	2L 2R	0	14	0	4.5	0.0	-4.5	0

Forward Reverse More

Conditioner:  
Type In or Select One

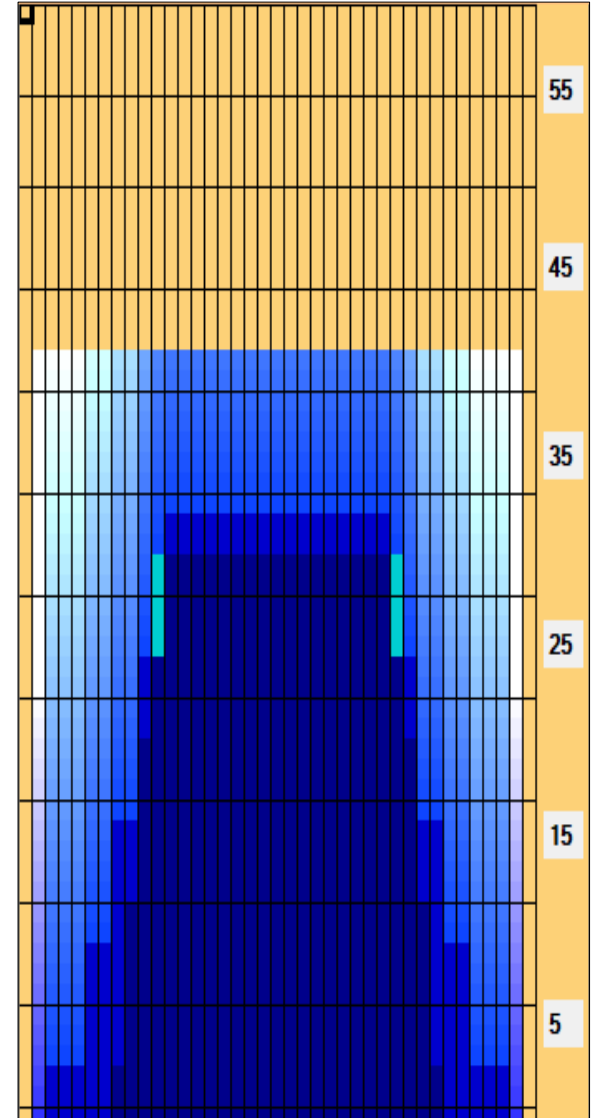
TransferType:  
Type In or Select One

Forward

Reverse

Combined

Buff



Item	3L-7L:18L-18R	8L-12L:18L-18R	13L-17L:18L-18R	18L-18R:17R-13R	18L-18R:12R-8R	18L-18R:7R-3R
Description	Outside Track:Middle	Middle Track:Middle	Inside Track:Middle	Middle: Inside Track	Middle:Middle Track	Middle:Outside Track
Track Zone Ratio	7.67	1.35	1	1	1.35	7.67

