

第38回東京都ダブルスポウリング選手権大会



Oil Pattern Distance: 42 Feet **Reverse Brush Drop:** 42 Feet **Oil Per Board:** 50 uL
Forward Oil Total: 15.35 mL **Reverse Oil Total:** 12 mL **Volume Oil Total:** 27.35 mL
Forward Boards Crossed: 307 Boards **Reverse Boards Crossed:** 240 Boards **Total Boards Crossed:** 547 Boards

Start	Stop	Loads	Speed	Crossed	Start	End	Feet	T.Oil
1	4L 4R	1	14	33	0.0	0.0	0.0	1650
2	7L 7R	2	14	54	0.0	3.9	3.9	2700
3	8L 8R	2	14	50	3.9	7.8	3.9	2500
4	9L 9R	3	18	69	7.8	15.4	7.6	3450
5	10L 10R	3	18	63	15.4	23.0	7.6	3150
6	11L 11R	2	22	38	23.0	29.2	6.2	1900
7	2L 2R	0	26	0	29.2	36.0	6.8	0
8	2L 2R	0	26	0	36.0	42.0	6.0	0

Navigation: Forward Reverse More

Start	Stop	Loads	Speed	Crossed	Start	End	Feet	T.Oil
1	2L 2R	0	30	0	42.0	34.0	-8.0	0
2	12L 12R	2	26	34	34.0	26.7	-7.3	1700
3	10L 10R	3	26	63	26.7	15.7	-11.0	3150
4	8L 8R	2	22	50	15.7	9.5	-6.2	2500
5	6L 6R	2	18	58	9.5	4.4	-5.1	2900
6	3L 3R	1	14	35	4.4	2.5	-1.9	1750
7	2L 2R	0	10	0	2.5	0.0	-2.5	0

Navigation: Forward Reverse More

Conditioner:
Type In or Select One

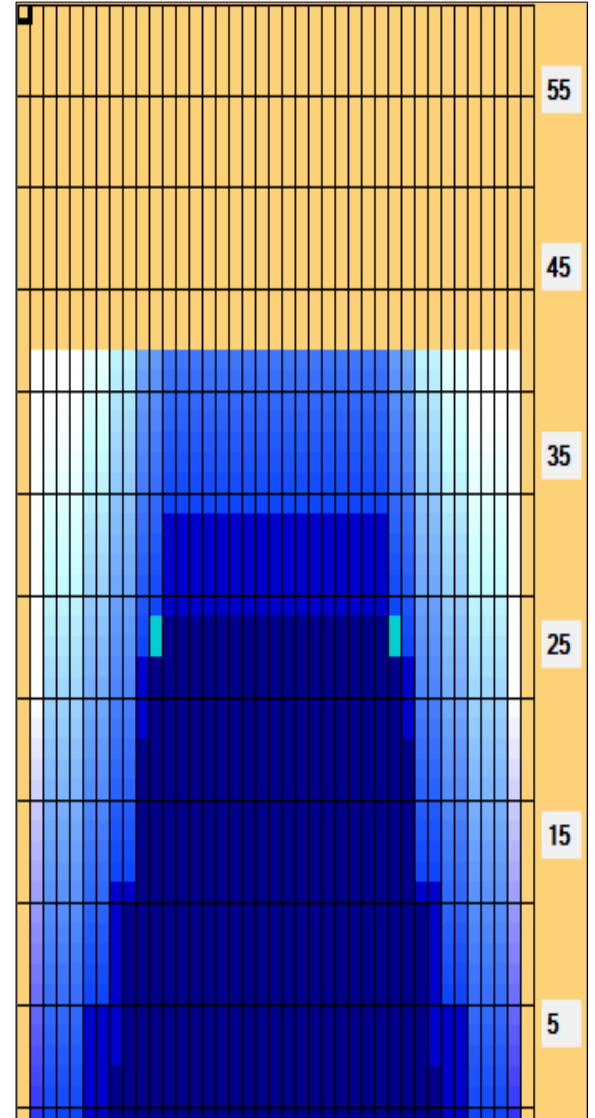
TransferType:
Type In or Select One

Forward

Reverse

Combined

Buff



Item	3L-7L:18L-18R	8L-12L:18L-18R	13L-17L:18L-18R	18L-18R:17R-13R	18L-18R:12R-8R	18L-18R:7R-3R
Description	Outside Track:Middle	Middle Track:Middle	Inside Track:Middle	Middle: Inside Track	Middle:Middle Track	Middle:Outside Track
Track Zone Ratio	7.67	1.34	1	1	1.34	7.67

